

ozlux[®]

ENERGY SAVING
LAMPS

RADIANT T5 Fluorescent Retrofit

Ozlux[®] T5 Fluorescent Series



A NEW RETROFIT STANDARD IN LIGHT OUTPUT

EFFICIENT & DURABLE

- Direct retrofit for 40% in Energy Savings
- Increased light output compared with standard retrofits
- Easy replacement of existing lights
- Extended operation of 20,000 Hours

MULTI-APPLICATIONS

- Instant ON without flicker
- Wide operating and colour temperature

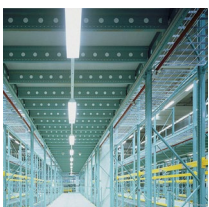
TECHNICAL

- Optimum Power Factor
- Low Total Harmonic Distortion
- Excellent voltage tolerance level

GREEN TECHNOLOGY

- Low energy consumption
- Low mercury content
- Less heat dissipation

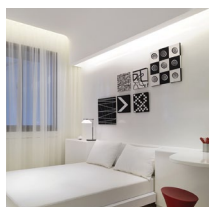
Applications:



Industrial



Commercial



Residential



ozlux® RADIANT T5 Fluorescent Retrofit

Ozlux® RADIANT T5 Fluorescent Retrofit is a new design which offers better light output and a direct cost saving replacement for 40% in energy savings. With its signature feature of no flicker, wide operating temperatures and various colour temperature, it provide its uses in many applications.

EFFICIENCY	OZLUX® T5	CONVENTIONAL T8
Total Wattage	25	42
x 365 Days with 12 Hours/day	4380	4380
Total Consumption (kWh)	109.5	197.1
x kWh rate of RM0.397	RM43.47	RM78.25
x 1000 units of lamps	RM43,471.50	RM78,248.70
Total Energy Cost Savings*	RM34,777.20	

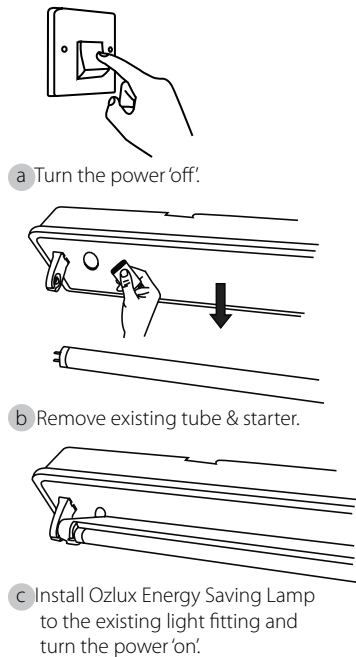
*Your actual savings may vary depending on energy costs in your geographic location.

TECHNICAL DATA & SPECIFICATION

PRODUCT CODE	DESCRIPTION	NOM. WATTAGE (W)	VOLTAGE (VAC)	POWER FACTOR	APPROX. LUMENS (LM)	APPROX. LIFESPAN (H)	CRI
OC4F25X2TA	4FT RADIANT T5 RETROFIT 25W	25	240	≥0.95	2660	20,000	85

* Various system configuration is possible. Refer Product Naming Convention for details.

INSTALLATION GUIDE



PRODUCT NAMING CONVENTION

AA-BB-CC-D-E-FF

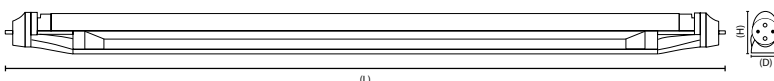
AA	PRODUCT CODE
OC	Standard
BB	TUBE CATEGORY
2F	2 Feet Retrofit System
4F	4 Feet Retrofit System
2L	2 Feet Linear System
4L	4 Feet Linear System
CC	WATTAGE
14	14 Watts
25	25 Watts
D	COLOUR
D	Daylight (6500K)
C	Cool White (4200K)
W	Warm White (2700K)
X	No Tube Fitted
E	VOLTAGE
1	110 Volts System
2	240 Volts System
FF	TYPE
SA	Standard
EA	Standard with Reflector
TA	Radiant

STANDARDS COMPLIANCE

IEC EN 60598-1	General Requirements and Test
IEC EN 60598-2-1	Specifications for Fixed General Purpose Luminaires
IEC EN 55015	Limits and Methods of Measurement of Radio Disturbance Characteristics of Electrical Lighting and Similar Equipment
IEC EN 61547	Equipment for General Lighting Purposes. EMC Immunity Requirements
IEC EN 61000-3-2	Electromagnetic Compatibility (EMC). Limits for Harmonic Current Emissions
IEC EN 61000-3-3	Electromagnetic Compatibility (EMC). Limitation of Voltage Changes, Voltage Fluctuations and Flicker in Public Low-Voltage Supply Systems
Dir. 2002/95/EC	Compliance to RoHS Regulations
CE Compliance	Conformity to European Compliance (Conformité Européenne)

NOTE

- Does not require Starter. Remove Starter before installation.
- Does not require Capacitor. Remove Capacitors before installation.
- Will not operate with Electronic Ballasts.
- Designed to be used with standard Magnetic Ballasts.
- Turn off power before changing lamp.



DIMENSIONS

4 Feet System (mm) - 1199 (L) x 24 (D) x 35 (H)
2 Feet System (mm) - 589 (L) x 24 (D) x 35 (H)

PACKING DATA

Units per box - 50 units
Gross weight
Nett weight
Packing Dimensions



Switch with us to **GREEN**

34-2, Jalan 3/146, Bandar Tasik Selatan, 57000 Kuala Lumpur, Malaysia.
Tel: +603 9057 8949 Fax: +603 9057 8946 Email: sales@dpisb.com

Website: www.ozlux.com

