

Ozlux®

ENERGY SAVING
LAMPS

MiniSPOT LED 3W

Ozlux® LED Series



MR16 LED LAMP



EFFICIENT & DURABLE

- Direct replacement for Halogen MR-16
- Less heat dissipation & low energy consumption
- Long lifespan of 50,000 Hours

MULTI-APPLICATIONS

- Suitable for Commercial Buildings, Showrooms, Store Display, Hotels and Restaurants
- Wide operating and colour temperature

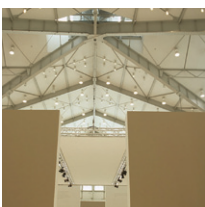
TECHNICAL

- Optimum Power Factor
- Low Total Harmonic Distortion
- Excellent voltage tolerance level

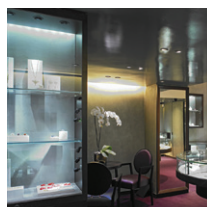
GREEN TECHNOLOGY

- Low energy consumption
- No mercury content
- Less heat dissipation

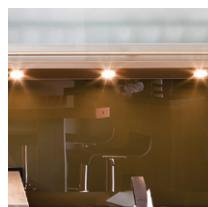
Applications:



Industrial



Commercial



Residential

ozlux® MiniSPOT LED 3W

Ozlux® MiniSPOT LED 3W is a direct cost saving replacement for conventional MR16 lamp. While it uses LED illumination, there is no heat generated through its light source and has lower energy consumption. With LED technology, the lifespan is extended which provides minimal replacement.

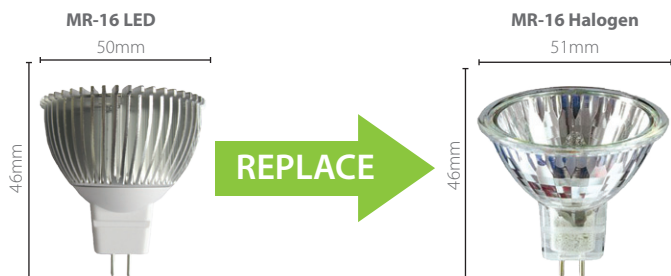
EFFICIENCY	OZLUX® MR16	MR16 HALOGEN
Total Wattage	3	25
x 365 Days with 12 Hours/day	4380	4380
Total Consumption (kWh)	13.1	109.5
x kWh rate of RM0.397	RM5.22	RM60.86
x 1000 units of lamps	RM5,216.58	RM60,860.10
Total Energy Cost Savings*	RM55,643.52	

*Your actual savings may vary depending on energy costs in your geographic location.

TECHNICAL DATA & SPECIFICATION

PRODUCT CODE	DESCRIPTION	NOM. WATTAGE (W)	VOLTAGE (VAC)	COLOUR TEMP. (K)	POWER FACTOR	APPROX. LUMENS (LM)	APPROX. LIFESPAN (H)	CRI	BASE HOLDER
OZES03DAM1M30	MINISPOT 3W DAYLIGHT	3	12	6000	≥0.95	270	40,000	≥80	MR16
OZES03WAM1M30	MINISPOT 3W WARM WHITE	3	12	3000	≥0.95	270	40,000	≥80	MR16
OZES03DBE2M30	MINISPOT 3W DAYLIGHT	3	240	6000	≥0.95	270	40,000	≥80	E27
OZES03WBE2M30	MINISPOT 3W WARM WHITE	3	240	3000	≥0.95	270	40,000	≥80	E27

* Various system configuration is possible. Refer Product Naming Convention for details.



PRODUCT NAMING CONVENTION

OZ-AA-BB-C-D-EE-FFF

AA	PRODUCT CODE
ES	Spot Light
BB	WATTAGE
03	3 Watts
C	COLOUR
D	Daylight (6500K)
W	Warm White (2700K)
D	VOLTAGE
A	12 VAC
B	240 VAC
EE	LAMP BASE
M1	E40 Base
E2	E27 Base
FFF	BEAM ANGLE
M30	30° Angle
M60	60° Angle

DIMENSIONS

MR16 LED Lamp (mm)
- 46 (L) x 50 (D) - 46g, 58g (E27)

PACKING DATA

Units per box - 12 units



Switch with us to **GREEN**

34-2, Jalan 3/146, Bandar Tasik Selatan, 57000 Kuala Lumpur, Malaysia.

Tel: +603 9057 8949 Fax: +603 9057 8946 Email: sales@dpisb.com Website: www.ozlux.com



ISO 9001:2008