



MiniSPOT LED 3W

Ozlux® LED Series



MR16 LED LAMP

EFFICIENT & DURABLE

- Direct replacement for Halogen MR-16
- Less heat dissipation & low energy consumption
- Long lifespan of 50,000 Hours

MULTI-APPLICATIONS

- Suitable for Commercial Buildings, Showrooms, Store Display, Hotels and Restaurants
- Wide operating and colour temperature

TECHNICAL

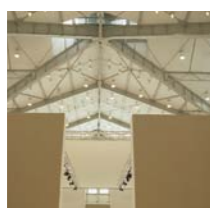
- Optimum Power Factor
- Low Total Harmonic Distortion
- Excellent voltage tolerance level

GREEN TECHNOLOGY

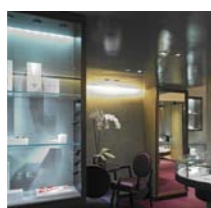
- Low energy consumption
- No mercury content
- Less heat dissipation



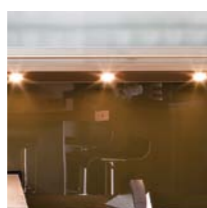
Applications:



Industrial



Commercial



Residential



ozlux® MiniSPOT LED 3W

Ozlux® MiniSPOT LED 3W is a direct cost saving replacement for conventional MR16 lamp. While it uses LED illumination, there is no heat generated through its light source and has lower energy consumption. With LED technology, the lifespan is extended which provides minimal replacement.

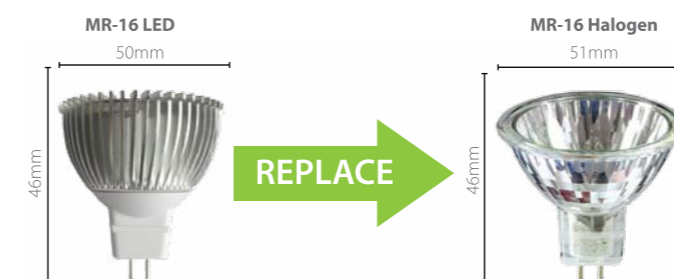
EFFICIENCY	OZLUX® MR16	MR16 HALOGEN
Total Wattage	3	25
x 365 Days with 12 Hours/day	4380	4380
Total Consumption (kWh)	13.1	109.5
x kWh rate of RM0.397	RM5.22	RM60.86
x 1000 units of lamps	RM5,216.58	RM60,860.10
Total Energy Cost Savings*	RM55,643.52	

*Your actual savings may vary depending on energy costs in your geographic location.

TECHNICAL DATA & SPECIFICATION

PRODUCT CODE	DESCRIPTION	NOM. WATTAGE (W)	VOLTAGE (VAC)	COLOUR TEMP. (K)	POWER FACTOR	APPROX. LUMENS (LM)	APPROX. LIFESPAN (H)	CRI	BASE HOLDER
OZES03DAM1M30	MINISPOT 3W DAYLIGHT	3	12	6000	≥0.95	270	40,000	≥80	MR16
OZES03WAM1M30	MINISPOT 3W WARM WHITE	3	12	3000	≥0.95	270	40,000	≥80	MR16
OZES03DBE2M30	MINISPOT 3W DAYLIGHT	3	240	6000	≥0.95	270	40,000	≥80	E27
OZES03WBE2M30	MINISPOT 3W WARM WHITE	3	240	3000	≥0.95	270	40,000	≥80	E27

* Various system configuration is possible. Refer Product Naming Convention for details.



PRODUCT NAMING CONVENTION

OZ-AA-BB-C-D-EE-FFF

AA	PRODUCT CODE
ES	Spot Light
BB	WATTAGE
03	3 Watts
C	COLOUR
D	Daylight (6500K)
W	Warm White (2700K)
D	VOLTAGE
A	12 VAC
B	240 VAC
EE	LAMP BASE
M1	E40 Base
E2	E27 Base
FFF	BEAM ANGLE
M30	30° Angle
M60	60° Angle

DIMENSIONS
MR16 LED Lamp (mm)
- 46 (L) x 50 (D) - 46g, 58g (E27)

PACKING DATA
Units per box - 12 units



Switch with us to **GREEN**

34-2, Jalan 3/146, Bandar Tasik Selatan, 57000 Kuala Lumpur, Malaysia.
Tel: +603 9057 8949 Fax: +603 9057 8946 Email: sales@dpisb.com Website: www.ozlux.com



Copyright DPI Industries Sdn. Bhd. All rights reserved. Ozlux®, the Ozlux® logo, and DPI Industries are registered trademarks of DPI Industries. While every effort is made to ensure the information given is accurate, DPI Industries does not accept liability for any errors or mistakes which may arise. All specifications are subject to change without notice.

BRC0109061002



LED Flood Ozlux® LED Series



COMPACT OUTDOOR LED FLOODLIGHT



EFFICIENT & DURABLE

- Replacement of Conventional Outdoor Floodlights
- Aluminium die-cast enclosure with toughened glass cover
- Long lifespan of 40,000 Hours

MULTI-APPLICATIONS

- Various Colours suitable for Commercial Buildings, Showrooms, Store Display, Hotels and Restaurants
- Wide operating temperature

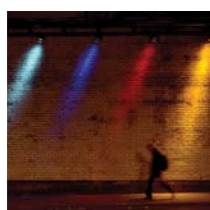
TECHNICAL

- Natural Colour rendition
- No UV emissions
- Optimum Power Factor
- IP65 Enclosure

GREEN TECHNOLOGY

- Low energy consumption
- No mercury content
- Less heat dissipation

Applications:



Industrial



Commercial



Residential



ozlux® LED Flood

Ozlux® LEDFlood is a direct cost saving replacement for conventional outdoor floodlight. With its compact, different Colour temperatures and ruggedized enclosure, it is able to provide various uses for outdoor applications. While it uses LED illumination, there is no heat generated through its light source and has lower energy consumption. With LED technology, the lifespan is extended which provides minimal replacement.

EFFICIENCY	OZLUX® LED FLOOD	CONV. 30W LAMP SET
Total Wattage	50	100
x 365 Days with 12 Hours/day	4380	4380
Total Consumption (kWh)	219.0	438.0
x kWh rate of RM0.397	RM86.94	RM173.89
x 100 units of lamps	RM8,694.30	RM17,388.60
Total Energy Cost Savings*	RM8,694.30	

*Your actual savings may vary depending on energy costs in your geographic location.

TECHNICAL DATA & SPECIFICATION

PRODUCT CODE	DESCRIPTION	NOM. WATTAGE (W)	VOLTAGE (VAC)	COLOUR TEMP. (K)	POWER FACTOR	APPROX. LUMENS (LM)	APPROX. LIFESPAN (H) ¹	CRI	BEAM ANGLE
OZEW10XBCBMAL	LED FLOOD S1 10W	10	240	6500K	≥0.60	800	40,000	≥80	160±3°
OZEW30XBCBMAL	LED FLOOD M1 30W	30	240	3000K	≥0.60	2400	40,000	≥80	160±3°
OZEW50XBCBMAL	LED FLOOD L1 50W	50	240	595NM	≥0.60	4000	40,000	≥80	160±3°
OZEW80XBCBMAL	LED FLOOD L2 80W	80	240	470NM	≥0.60	6400	40,000	≥80	160±3°

* Various system configuration is possible. Refer Product Naming Convention for details.
1 Approximate lifespan will be affected both by the LED package and transformer driver.

PRODUCT NAMING CONVENTION OZ-AA-BB-C-D-EE-FFF

AA PRODUCT CODE
EW Flood Light

BB WATTAGE
10 10 Watts
30 30 Watts
50 50 Watts
80 80 Watts

C COLOUR
D Daylight (6500K)
W Warm White (2700K)
Y Yellow (595NM)
B Blue (470NM)
R Red (530NM)
G Green (630NM)

D VOLTAGE
B 240 VAC

EE LAMP BASE
CB Cable Entry

FFF BEAM ANGLE
MAI 145° Angle
MAL 160° Angle

DIMENSIONS & WEIGHT

LED Flood 10W - 85 (H) x 115 (W) x 90 (D) - 515g
LED Flood 30W - 185 (H) x 225 (W) x 126 (D) - 2600g
LED Flood 50W - 236 (H) x 290 (W) x 183 (D) - 3500g
LED Flood 80W - 285 (H) x 360 (W) x 110 (D) - 6200g

PACKING DATA

LED Flood 10W - 20 units
LED Flood 30W - 4 units
LED Flood 50W - 4 units
LED Flood 80W - 2 units

GROSS WEIGHT

LED Flood 10W - 13.5kg
LED Flood 30W - 9kg
LED Flood 50W - 15.2kg
LED Flood 80W - 13kg

NETT WEIGHT

LED Flood 10W - 12.5kg
LED Flood 30W - 10kg
LED Flood 50W - 16.2kg
LED Flood 80W - 14kg

PACKING DIMENSIONS

LED Flood 10W - 52.5x27x23.5
LED Flood 30W - 56.5x34.5x25
LED Flood 50W - 65.5x38x29
LED Flood 80W - 44x30x33



Switch with us to **GREEN**

34-2, Jalan 3/146, Bandar Tasik Selatan, 57000 Kuala Lumpur, Malaysia.
Tel: +603 9057 8949 Fax: +603 9057 8946 Email: sales@dpisb.com Website: www.ozlux.com



Copyright DPI Industries Sdn. Bhd. All rights reserved. Ozlux®, the Ozlux® logo, and DPI Industries are registered trademarks of DPI Industries. While every effort is made to ensure the information given is accurate, DPI Industries does not accept liability for any errors or mistakes which may arise. All specifications are subject to change without notice.

BRC02090610002