

ozlux®

ENERGY SAVING LAMPS

T5 FLUORESCENT RETROFIT

Ozlux® T5 Fluorescent Series



EFFICIENT & DURABLE

- Direct retrofit for 40% in Energy Savings
- Easy replacement of existing lights
- Similar light output with T8 system
- Extended operation of 20,000 Hours

MULTI-APPLICATIONS

- Instant ON without flicker
- Wide operating and colour temperature

TECHNICAL

- Optimum Power Factor
- Low Total Harmonic Distortion
- Excellent voltage tolerance level

GREEN TECHNOLOGY

- Low energy consumption
- Low mercury content
- Less heat dissipation



T5 Fluorescent Retrofit Lamps featuring Ozlux® Lamp Technology

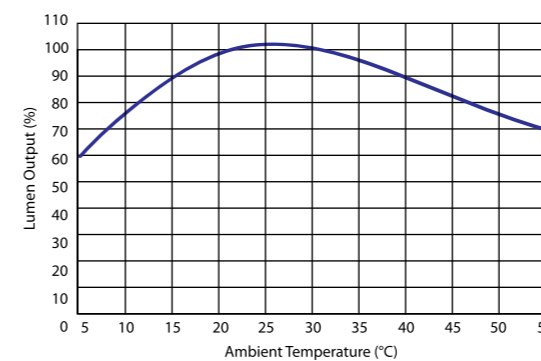
Electrical and Technical Data

Product Number	Watts	Power Factor	Bulb	Base	Pkg. Qty.	Color Temp (K)	CRI	Dimension LxWxH (mm)	Rated Avg. Life (Hrs) 1	Approx. Initial Lumens 2
OC2F12D2SA	12	>0.95	T5	G13	50	6500K	85	589 x 24 x 35	20,000	1350
OC2F12C2SA	12	>0.95	T5	G13	50	4200K	85	589 x 24 x 35	20,000	1350
OC2F12W2SA	12	>0.95	T5	G13	50	2700K	85	589 x 24 x 35	20,000	1350
OC4F25D2SA	25	>0.95	T5	G13	50	6500K	85	1199 x 24 x 35	20,000	2900
OC4F25C2SA	25	>0.95	T5	G13	50	4200K	85	1199 x 24 x 35	20,000	2900
OC4F25W2SA	25	>0.95	T5	G13	50	2700K	85	1199 x 24 x 35	20,000	2900
OC2F12D2EA	12	>0.95	T5	G13	30	6500K	85	589 x 35 x 35	20,000	1350
OC2F12C2EA	12	>0.95	T5	G13	30	4200K	85	589 x 35 x 35	20,000	1350
OC2F12W2EA	12	>0.95	T5	G13	30	2700K	85	589 x 35 x 35	20,000	1350
OC4F25D2EA	25	>0.95	T5	G13	30	6500K	85	1199 x 35 x 35	20,000	2900
OC4F25C2EA	25	>0.95	T5	G13	30	4200K	85	1199 x 35 x 35	20,000	2900
OC4F25W2EA	25	>0.95	T5	G13	30	2700K	85	1199 x 35 x 35	20,000	2900

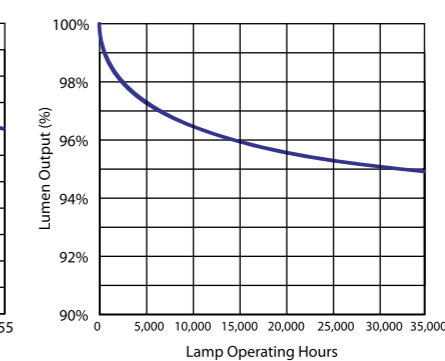
1) Average life under specified test conditions with lamps turned off and restarted no more frequently than once every 3 operating hours. Lamp life is appreciably longer if lamps are started less frequently.

2) Approximate initial lumens. The lamp lumen output is based upon lamp performance after 100 hours of operating life, when the output is measured during operation on a reference ballast under standard laboratory conditions.

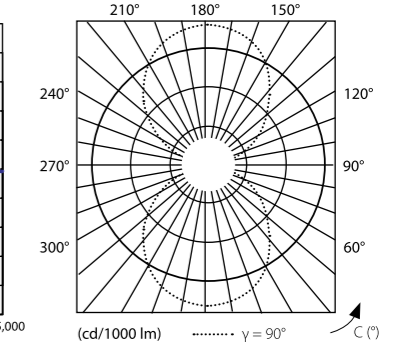
Lumens vs. Ambient Temperature



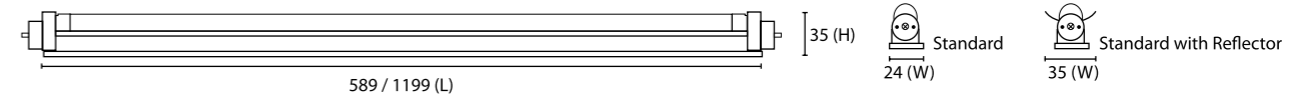
Energy Lumen Maintenance



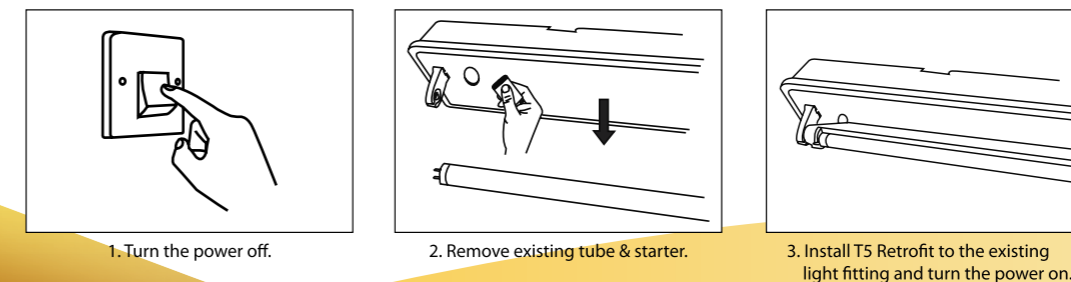
Luminous Intensity Distribution



Dimensions (mm)



Installation Guide



STANDARDS COMPLIANCE

- IEC/EN 60598-1 General requirements and test
- IEC/EN 60598-2-1 Specifications for fixed general purpose luminaires
- EN 55015 Limits and Methods of Measurement of radio disturbance characteristics of electrical lighting and similar equipment
- EN 61547 Equipment for general lighting purposes. EMC immunity requirements
- IEC/EN 61000-3-2 Electromagnetic compatibility (EMC). Limits for harmonic current emissions
- EN 61000-3-3 Electromagnetic compatibility (EMC). Limitation of voltage changes, voltage fluctuations and flicker in public low-voltage supply systems
- Dir. 2002/95/EC Compliance to RoHS regulations
- CE Compliance Conformity to European compliance (Conformité Européenne)

NOTES:

- Does not require Starter. Remove Starter before installation.
- Does not require Capacitor. Remove Capacitors before installation.
- Will not operate with Electronic Ballasts.
- Designed to be used with standard Magnetic Ballasts.
- Turn off power before changing lamp.



34-2, Jalan 3/146, Bandar Tasik Selatan, 57000 Kuala Lumpur, Malaysia.
Tel: +603 9057 8949 Fax: +603 9057 8946 Email: sales@dpsb.com Web: www.ozlux.com

© 2011 DPI Industries Sdn. Bhd. All rights reserved.



BRA02200611003



T5 Linear Fluorescent

Ozlux® T5 Fluorescent Series



T5 Linear Fluorescent featuring Ozlux® Lamp Technology

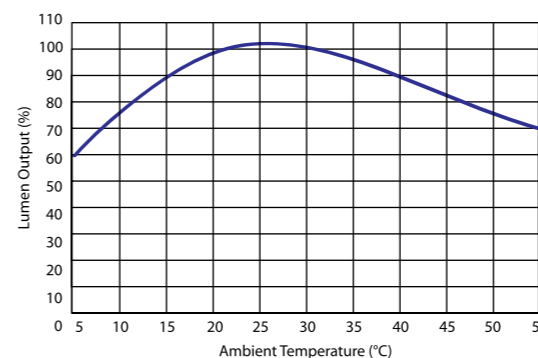
Ozlux® T5 Linear Fluorescent is a direct cost saving replacement for an efficient and durable lighting applications which provides 40% energy savings in comparison with T8 conventional lamps. With its signature feature of interconnection of 10 T5 Linear units, no flicker, slim profile, ballast-free system and various colour temperature, it provide its uses in many general and indirect lighting applications.

Electrical and Technical Data

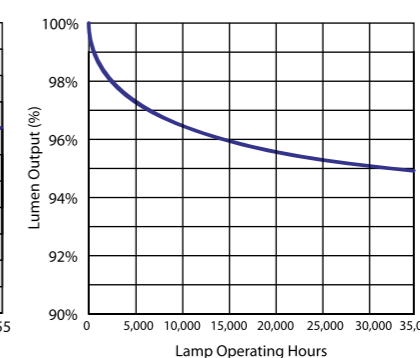
Product Number	Watts	Power Factor	Bulb	Base	Pkg. Qty.	Color Temp (K)	CRI	Dimension LxDxH (mm)	Rated Avg. Life (Hrs) ¹	Approx. Initial Lumens ²
OC2L12D2SA	12	≥0.95	T5	G13	30	6500K	85	570x23x38	20,000	1330
OC2L12C2SA	12	≥0.95	T5	G13	30	4200K	85	570x23x38	20,000	1330
OC2L12W2SA	12	≥0.95	T5	G13	30	2700K	85	570x23x38	20,000	1330
OC4L25D2SA	25	≥0.95	T5	G13	30	6500K	85	1170x23x38	20,000	2660
OC4L25C2SA	25	≥0.95	T5	G13	30	4200K	85	1170x23x38	20,000	2660
OC4L25W2SA	25	≥0.95	T5	G13	30	2700K	85	1170x23x38	20,000	2660
OC2L12D2SAC	12	≥0.95	T5	G13	30	6500K	85	570x23x38	20,000	1330
OC2L12C2SAC	12	≥0.95	T5	G13	30	4200K	85	570x23x38	20,000	1330
OC2L12W2SAC	12	≥0.95	T5	G13	30	2700K	85	570x23x38	20,000	1330
OC4L25D2SAC	25	≥0.95	T5	G13	30	6500K	85	1170x23x38	20,000	2660
OC4L25C2SAC	25	≥0.95	T5	G13	30	4200K	85	1170x23x38	20,000	2660
OC4L25W2SAC	25	≥0.95	T5	G13	30	2700K	85	1170x23x38	20,000	2660

1) Average life under specified test conditions with lamps turned off and restarted no more frequently than once every 3 operating hours. Lamp life is appreciably longer if lamps are started less frequently.
 2) Approximate initial lumens. The lamp lumen output is based upon lamp performance after 100 hours of operating life, when the output is measured during operation on a reference ballast under standard laboratory conditions.

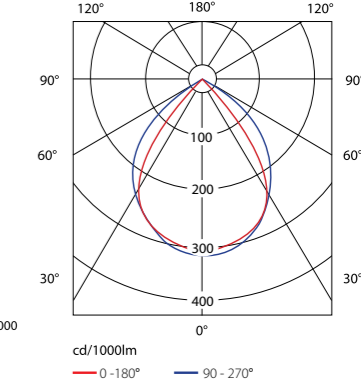
Lumens vs. Ambient Temperature



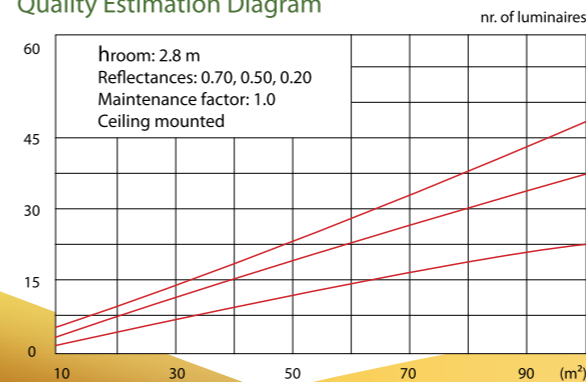
Energy Lumen Maintenance



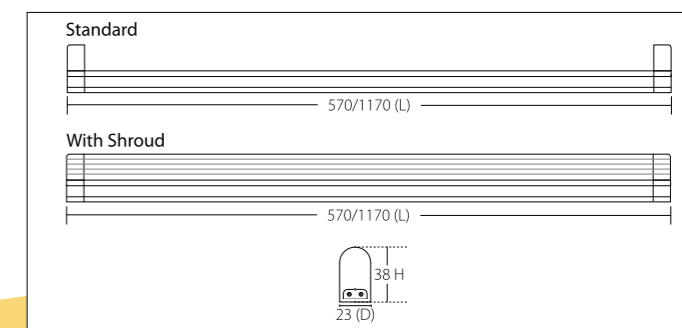
Luminous Intensity Distribution



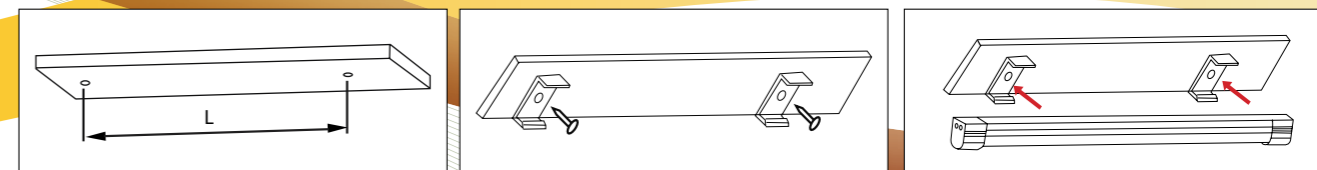
Quality Estimation Diagram



Dimensions (mm)



Installation Guide



1. Drill two 2mm holes in the ceiling with the distance of 625mm(25W) and 380mm(12W) between the two holes.
2. Use the self tapping screws to fix the two installation brackets.
3. Clip fitting into the two brackets.

EFFICIENT & DURABLE

- Self-ballasted system for 40% in Energy Savings
- Slim profile and interconnect up to 10 units
- Similar light output with T8 system
- Extended operation of 20,000 Hours

MULTI-APPLICATIONS

- Instant ON without flicker
- Wide operating and colour temperature

TECHNICAL

- Optimum Power Factor
- Low Total Harmonic Distortion
- Excellent voltage tolerance level

GREEN TECHNOLOGY

- Low energy consumption
- Low mercury content
- Less heat dissipation



34-2, Jalan 3/146, Bandar Tasik Selatan, 57000 Kuala Lumpur, Malaysia.
 Tel: +603 9057 8949 Fax: +603 9057 8946 Email: sales@dpsb.com Web: www.ozlux.com





RADIANT T5 Fluorescent Retrofit

Ozlux® T5 Fluorescent Series



A NEW RETROFIT STANDARD IN LIGHT OUTPUT

EFFICIENT & DURABLE

- Direct retrofit for 40% in Energy Savings
- Increased light output compared with standard retrofits
- Easy replacement of existing lights
- Extended operation of 20,000 Hours

MULTI-APPLICATIONS

- Instant ON without flicker
- Wide operating and colour temperature

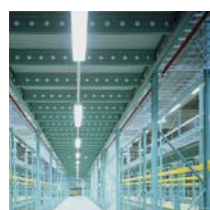
TECHNICAL

- Optimum Power Factor
- Low Total Harmonic Distortion
- Excellent voltage tolerance level

GREEN TECHNOLOGY

- Low energy consumption
- Low mercury content
- Less heat dissipation

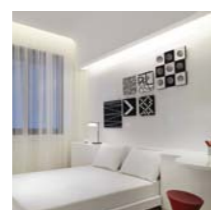
Applications:



Industrial



Commercial



Residential



ozlux® RADIANT T5 Fluorescent Retrofit

Ozlux® RADIANT T5 Fluorescent Retrofit is a new design which offers better light output and a direct cost saving replacement for 40% in energy savings. With its signature feature of no flicker, wide operating temperatures and various colour temperature, it provide its uses in many applications.

EFFICIENCY	OZLUX® T5	CONVENTIONAL T8
Total Wattage	25	42
x 365 Days with 12 Hours/day	4380	4380
Total Consumption (kWh)	109.5	197.1
x kWh rate of RM0.397	RM43.47	RM78.25
x 1000 units of lamps	RM43,471.50	RM78,248.70
Total Energy Cost Savings*	RM34,777.20	

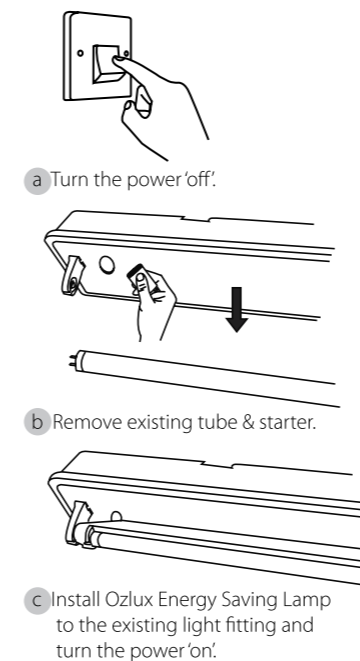
*Your actual savings may vary depending on energy costs in your geographic location.

TECHNICAL DATA & SPECIFICATION

PRODUCT CODE	DESCRIPTION	NOM. WATTAGE (W)	VOLTAGE (VAC)	POWER FACTOR	APPROX. LUMENS (LM)	APPROX. LIFESPAN (H)	CRI
OC4F25X2TA	4FT RADIANT T5 RETROFIT 25W	25	240	≥0.95	2660	20,000	85

*Various system configuration is possible. Refer Product Naming Convention for details.

INSTALLATION GUIDE



PRODUCT NAMING CONVENTION

AA-BB-CC-D-E-FF

AA	PRODUCT CODE
OC	Standard
BB	TUBE CATEGORY
2F	2 Feet Retrofit System
4F	4 Feet Retrofit System
2L	2 Feet Linear System
4L	4 Feet Linear System
CC	WATTAGE
14	14 Watts
25	25 Watts
D	COLOUR
D	Daylight (6500K)
C	Cool White (4200K)
W	Warm White (2700K)
X	No Tube Fitted
E	VOLTAGE
1	110 Volts System
2	240 Volts System
FF	TYPE
SA	Standard
EA	Standard with Reflector
TA	Radiant

STANDARDS COMPLIANCE

IEC EN 60598-1	General Requirements and Test
IEC EN 60598-2-1	Specifications for Fixed General Purpose Luminaires
IEC EN 55015	Limits and Methods of Measurement of Radio Disturbance Characteristics of Electrical Lighting and Similar Equipment
IEC EN 61547	Equipment for General Lighting Purposes, EMC Immunity Requirements
IEC EN 61000-3-2	Electromagnetic Compatibility (EMC), Limits for Harmonic Current Emissions
IEC EN 61000-3-3	Electromagnetic Compatibility (EMC), Limitation of Voltage Changes, Voltage Fluctuations and Flicker in Public Low-Voltage Supply Systems
Dir. 2002/95/EC	Compliance to RoHS Regulations
CE Compliance	Conformity to European Compliance (Conformité Européenne)

NOTE

- Does not require Starter. Remove Starter before installation.
- Does not require Capacitor. Remove Capacitors before installation.
- Will not operate with Electronic Ballasts.
- Designed to be used with standard Magnetic Ballasts.
- Turn off power before changing lamp.

DIMENSIONS

4 Feet System (mm) - 1199 (L) x 24 (D) x 35 (H)
2 Feet System (mm) - 589 (L) x 24 (D) x 35 (H)

PACKING DATA

Units per box - 50 units



34-2, Jalan 3/146, Bandar Tasik Selatan, 57000 Kuala Lumpur, Malaysia.
Tel: +603 9057 8949 Fax: +603 9057 8946 Email: sales@dpisb.com Website: www.ozlux.com

Switch with us to GREEN



Copyright DPI Industries Sdn. Bhd. All rights reserved. Ozlux®, the Ozlux® logo, and DPI Industries are registered trademarks of DPI Industries. While every effort is made to ensure the information given is accurate, DPI Industries does not accept liability for any errors or mistakes which may arise. All specifications are subject to change without notice.



T5 Fluorescent Tube

Ozlux® T5 Fluorescent Series



LONG LIFESPAN AND HIGH EFFICACY FLUORESCENT TUBE

EFFICIENT & DURABLE

- High lamp efficacies up to 95lm/W
- Efficient Tri-Phosphor Coating
- Similar light output with T8 system
- Extended operation of 20,000 Hours

MULTI-APPLICATIONS

- Suitable for Instant ON without flicker
- Wide operating and colour temperature

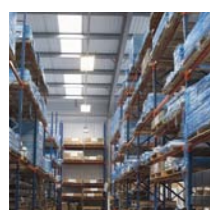
TECHNICAL

- High lamp efficacies up to 95lm/W
- Tri-Phosphor for excellent spectrum rendering

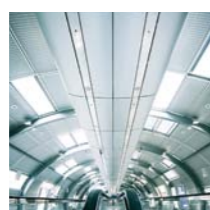
GREEN TECHNOLOGY

- Low energy consumption
- Low mercury content
- Less heat dissipation

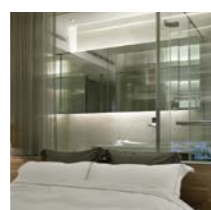
Applications:



Industrial



Commercial



Residential



ozlux® T5 Fluorescent Tube

Ozlux® T5 Fluorescent Tube is an efficient Fluorescent lighting system available for various applications. Used together with our Ozlux® Retrofit or Linear System, it offers 40% in energy savings. Even with its smaller form factor, these lamps offer high luminous efficacy of up to 95 lumens/W and offers an extended operation of 20,000 hours.

When used together with Ozlux® Retrofit or Linear System

EFFICIENCY	OZLUX® T5	CONVENTIONAL T8
Total Wattage	25	45
x 365 Days with 12 Hours/day	4380	4380
Total Consumption (kWh)	109.5	197.1
x kWh rate of RM0.397	RM43.47	RM78.25
x 1000 units of lamps	RM43,471.50	RM78,248.70
Total Energy Cost Savings*	RM34,777.20	

*Your actual savings may vary depending on energy costs in your geographic location.

TECHNICAL DATA & SPECIFICATION

PRODUCT CODE	DESCRIPTION	EFFICIENCY (LM/W)	NOM. WATTAGE (W)	COLOUR TEMP. (K)	APPROX. LUMENS (LM)	APPROX. LIFESPAN (H)	CRI
OC4F25D	4FT T5 TUBE 25W DAYLIGHT	95	25	6500	2900	20,000	85
OC4F25C	4FT T5 TUBE 25W COOL WHITE	95	25	4200	2900	20,000	85
OC4F25W	4FT T5 TUBE 25W WARM WHITE	95	25	2700	2900	20,000	85
OC2F14D	2FT T5 TUBE 14W DAYLIGHT	95	14	6500	1450	20,000	85
OC2F14C	2FT T5 TUBE 14W COOL WHITE	95	14	4200	1450	20,000	85
OC2F14W	2FT T5 TUBE 14W WARM WHITE	95	14	2700	1450	20,000	85

* Various system configuration is possible. Refer Product Naming Convention for details.

PRODUCT NAMING CONVENTION AA-BB-CC-D

AA	PRODUCT CODE
OC	Standard
BB	TUBE CATEGORY
2F	2 Feet Retrofit System
4F	4 Feet Retrofit System
2L	2 Feet Linear System
4L	4 Feet Linear System
CC	WATTAGE
14	14 Watts
25	25 Watts
D	COLOUR
D	Daylight (6500K)
C	Cool White (4200K)
W	Warm White (2700K)
X	No Tube Fitted

STANDARDS COMPLIANCE

Dir. 2002/95/EC	Compliance to RoHS Regulations
CE Compliance	Conformity to European Compliance (Conformité Européenne)

DIMENSIONS

4 Feet Tube (mm) - 1149 (L) x 16 (D)
2 Feet Tube (mm) - 549 (L) x 16 (D)

PACKING DATA

Units per box - 100 units



Switch with us to **GREEN**

34-2, Jalan 3/146, Bandar Tasik Selatan, 57000 Kuala Lumpur, Malaysia.
Tel: +603 9057 8949 Fax: +603 9057 8946 Email: sales@dpisb.com Website: www.ozlux.com



Copyright DPI Industries Sdn. Bhd. All rights reserved. Ozlux®, the Ozlux® logo, and DPI Industries are registered trademarks of DPI Industries. While every effort is made to ensure the information given is accurate, DPI Industries does not accept liability for any errors or mistakes which may arise. All specifications are subject to change without notice.

BRO040610002